

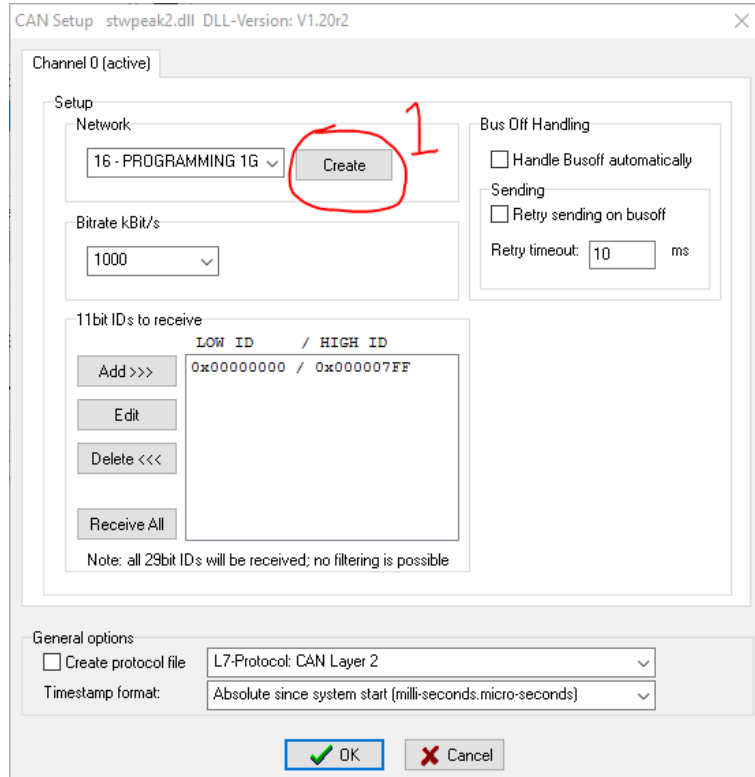
SENTINEL ECU PROGRAMMING REFERENCE

1. First time installs
 - a. Install Sentinel ECU FLASH utility.
 - i. Enter Sentinel ECU Flash Utility folder
 - ii. Run Setup
 1. Press yes on pop up if pops up
 2. Press next
 3. Press next
 4. Press yes
 5. Press Next
 6. Press Next
 7. Make sure PEAK-System Technik GmbH CAN interface is selected
 8. Press Next
 9. Press Yes on Popup
 10. Press Ok
 11. Install PEAK CAN module driver
 - i. Press next
 - ii. Press I agree
 - iii. Press Next
 - iv. Press Next
 - v. Press Next
 - vi. Press Next
 - vii. Should be installing
 - viii. Press Finish
 - ix. Press Ok
 12. Select PCAN USB
 13. Press next
 14. Type SureFireNet into box instead of TestNet
 15. Press Next
 16. Press OK
 - iii. Copy winflash.ini file
 1. On computer go to
 - a. C:\Program Files (x86)\STW\KEFEX Winflash\Winflash
 - b. Copy winflash.ini provided to this folder
 - b. Plug CAN Module into Computer and let drivers install(this can take a few minutes)

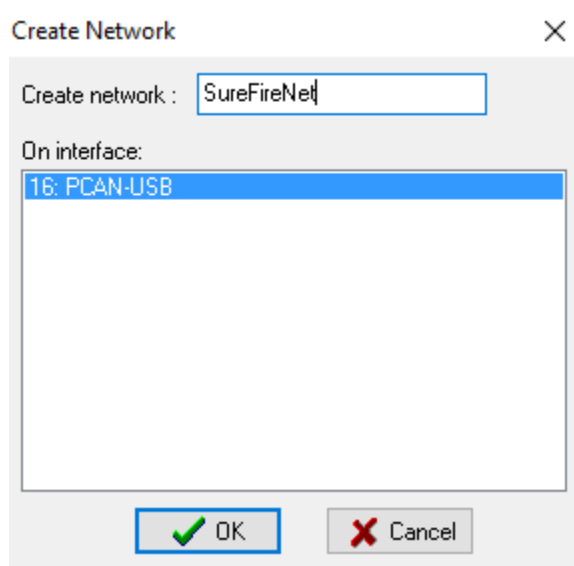
- c. Run WinFlash(RIGHT CLICK ON WINFLASH and run as ADMINISTRATOR, VERY IMPORTANT!!)

i. Now setup driver and file location

1. Press Select at top of page
2. Press top configure button



- 3.
4. Press Create
5. Type SureFireNet into the Create Network Box
6. Select Device listed in the On Interface Box
7. Press Ok



- 8.

9. Press Ok
 10. Make sure bit rate is set to 1000
 11. Press Ok to go back to setup
 12. Press OK to go back to main screen
 - ii. Now setup file to program
 1. Press select at top next to HEX FILE
 2. Find the ISO Sentinel HEX file on the USB drive
 3. Press ok or open to select
 - iii. Computer should be setup now.
2. Programming ECU
 - a. Run Winflash
 - b. Press Flash Node button
 - c. Should see resetting node
 - d. Then should see erasing sectors
 - e. Then should see programming
 - f. Then have to press ok at the end to start the ECU